

# SUITES 14, 16, 18, 20

## 2288 - 2319 SQ FT\*

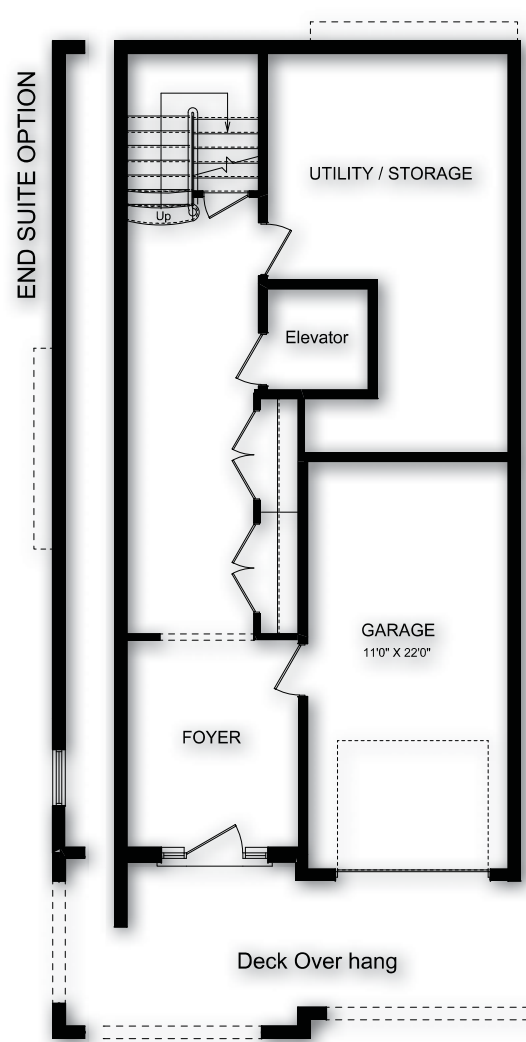
### SUITES

20  
2319 SqFt

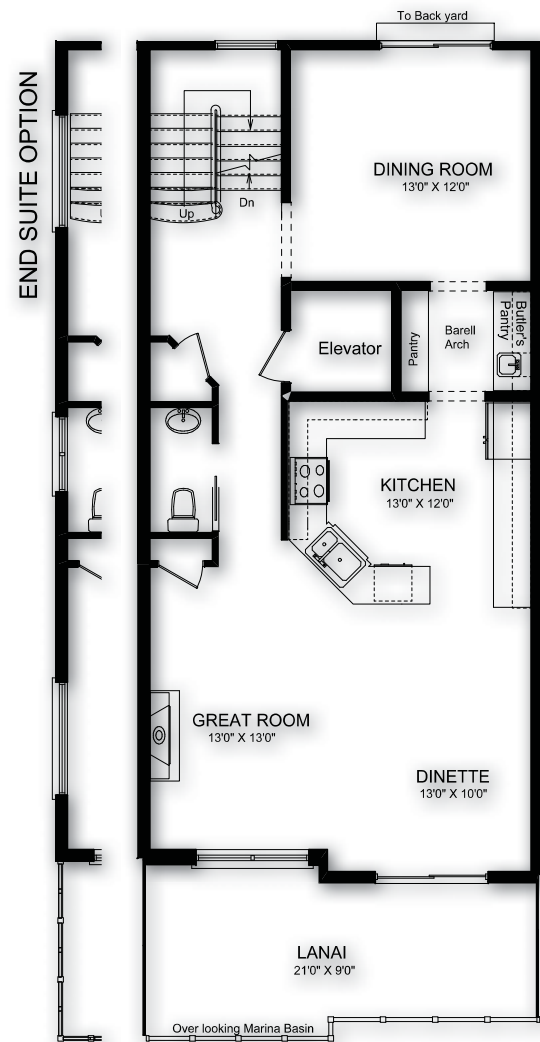
18  
2288 SqFt

16  
2294 SqFt

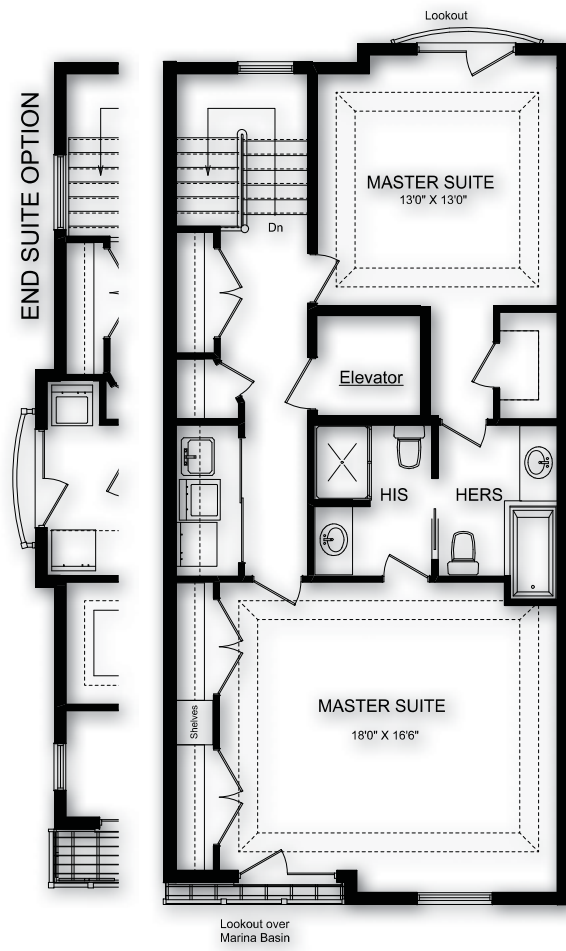
14  
2300 SqFt



GROUND FLOOR



MAIN FLOOR



SECOND FLOOR

The "Lake Series" will be an enclave of eight unique town homes featuring private recessed garden hideaways overlooking Lake Street with alternating rod iron and evergreen fencing. With striking rooftop dormer windows and natural vegetation and burming to create private Zen garden areas, these homes will be as stunning from the outside as they are within. Facing the marina basin, each home will feature a beautiful open-concept balcony overlooking your private slip to marry the residential and marina lifestyle, with two stories atop the garage and entry foyers.



# Lake Series

\*All dimensions are approximate. Sizes and specifications are subject to change without notice. E. & O.E. All illustrations are artist's concept. Actual useable floor space varies from stated floor area.