

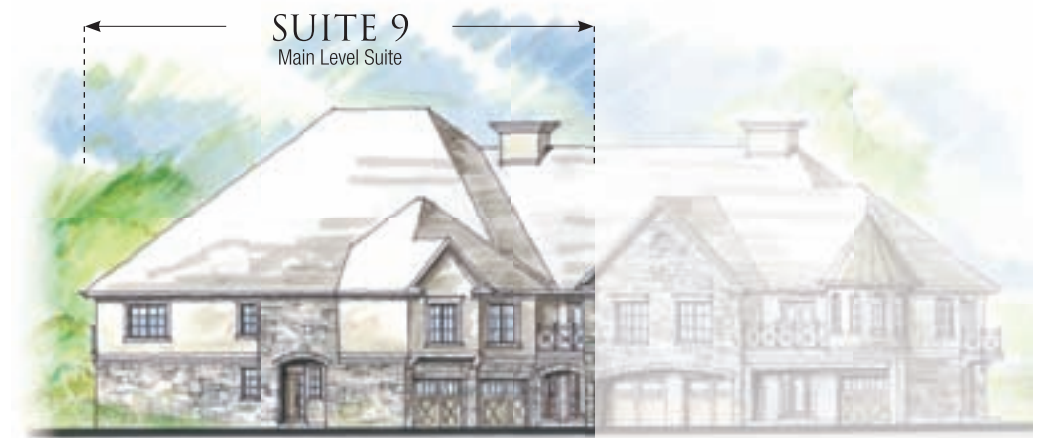
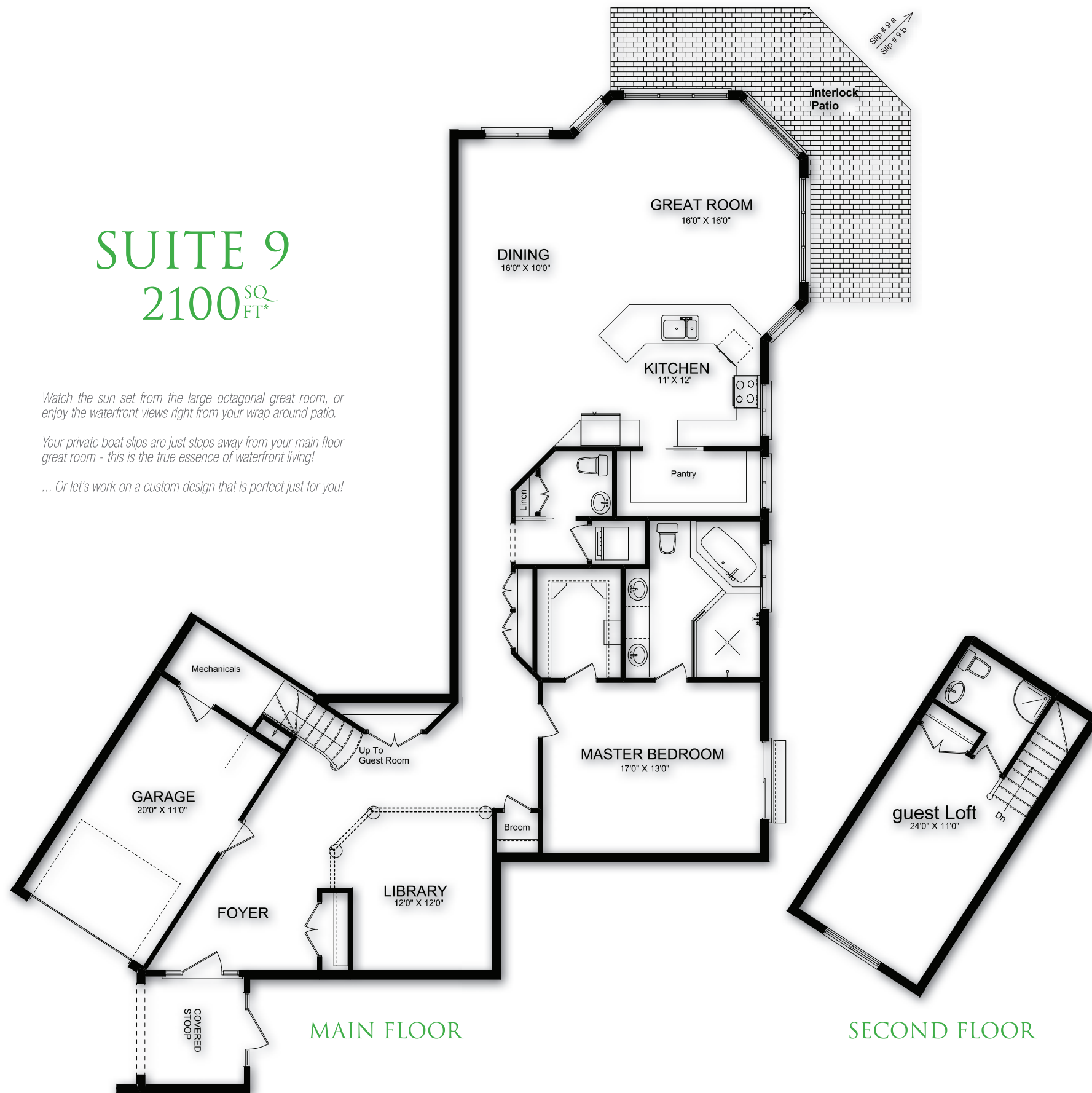
SUITE 9

2100^{SQ} FT*

Watch the sun set from the large octagonal great room, or enjoy the waterfront views right from your wrap around patio.

Your private boat slips are just steps away from your main floor great room - this is the true essence of waterfront living!

... Or let's work on a custom design that is perfect just for you!



The "Island Series" will be a private, twin grouping of twelve gracious one-floor townhomes on the island. Choose a main floor home with large floor to ceiling windows or rise to the second floor in a state-of-the-art elevator to enjoy a spacious deck, over-looking your boat slip and the lake. The stone and stucco exteriors of these homes will be an eye-catching signature for this beautiful development and each will boast its own 2 private boat slips, back garden, and private rear and front balconies. Beautiful garden areas surrounding the gazebo will offer a perfect spot to enjoy a glass of wine and just take it all in!



*All dimensions are approximate. Sizes and specifications are subject to change without notice. E. & O.E. All illustrations are artist's concept. Actual useable floor space varies from stated floor area.

Island Series North