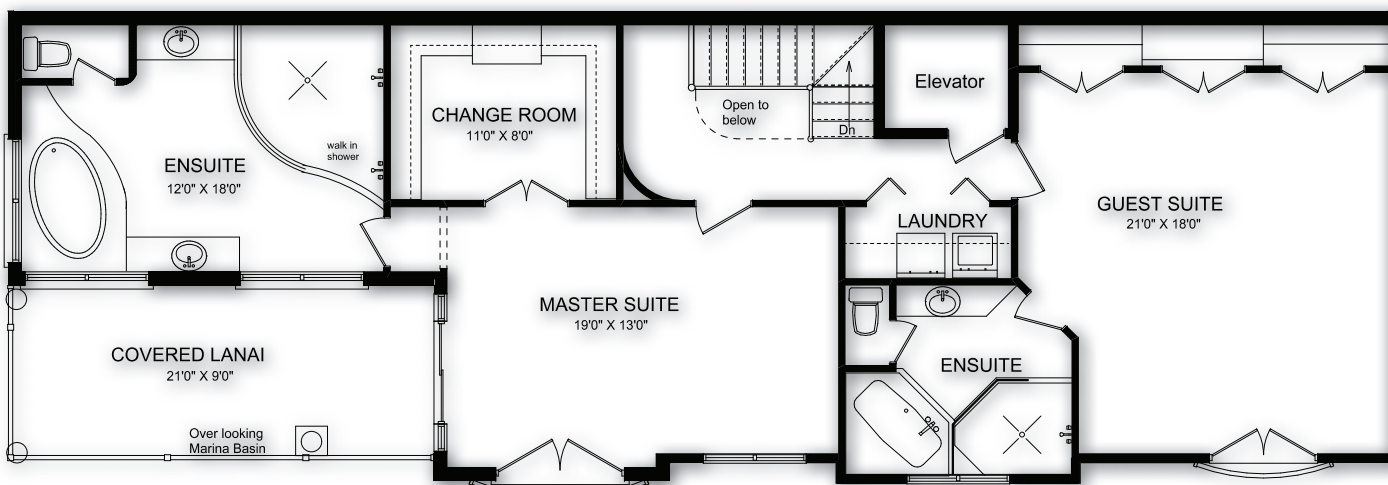




SECOND FLOOR

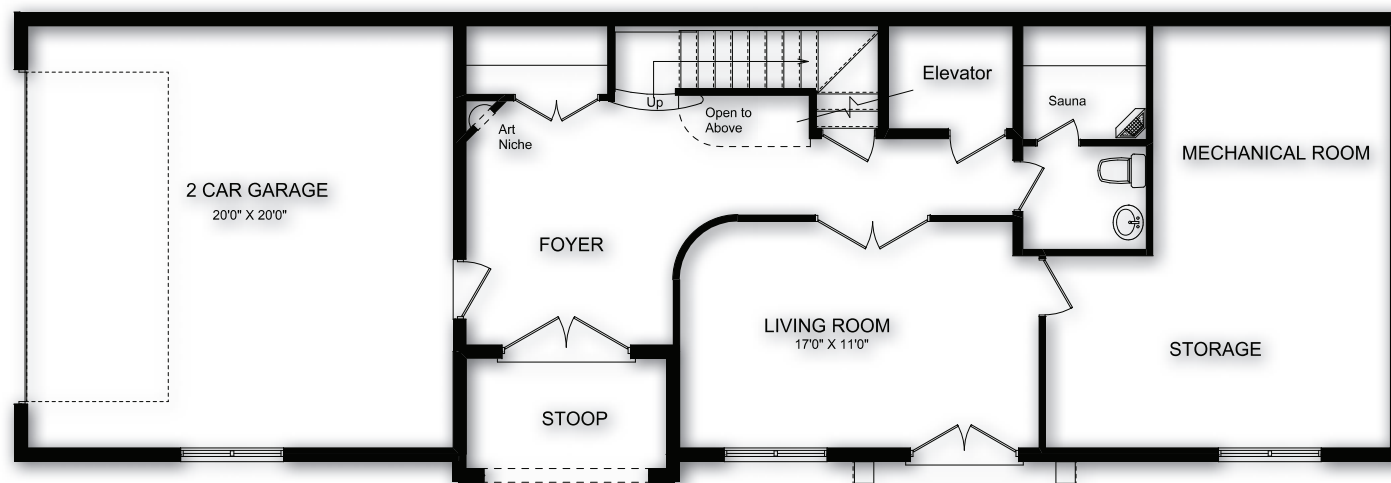


MAIN FLOOR

This custom suite boasts two full master suites with private balconies overlooking the marina basin.

Turn the ground floor into a home office or possibly a billiards room!

... Or let's work on a custom design that is perfect just for you!



GROUND FLOOR



The "Maple Series" will feature just two unique homes linked at the garage on the lower level, but designed to look like separate dwellings. The exterior of this lovely pair of homes will be stucco & stone to blend seamlessly with the existing streetscape. Open concept elevators will allow you to travel up to your private garden on the Maple Street level or you can relax on the connected 20' by 20' deck overlooking the entire marina basin and your private slip. Each of these spacious townhomes will be in the 3000 square feet range.

SUITE 22
3043 SQ FT*



Maple Series

*All dimensions are approximate. Sizes and specifications are subject to change without notice. E. & O.E. All illustrations are artist's concept. Actual useable floor space varies from stated floor area.